

MIWA Techno

Laser Cleaner

AT800CA

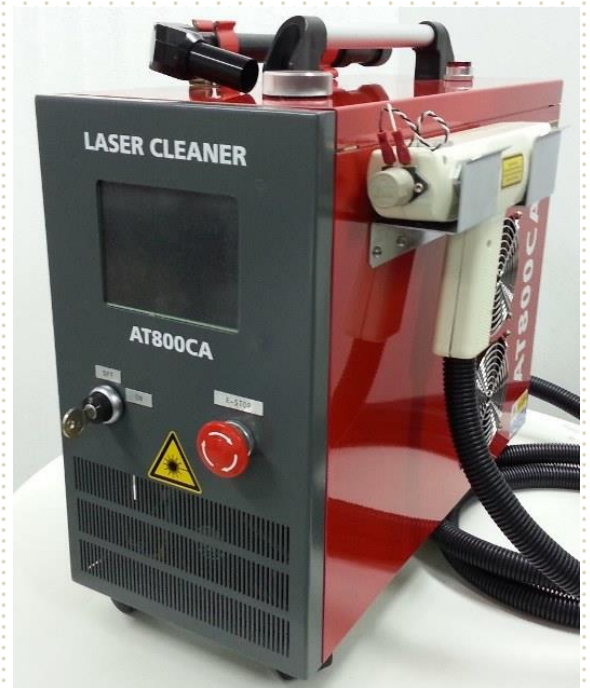
Effective Non-Contact System for Removal of Contaminant

Excellent for Test Contact Pins Cleaning

Compact Design to Suit Any Industrial Environment

Easy Operation with Minimal Maintenance

Equipped with Safety Interlocks



APPLICATION:

Semicon Socket Pin Cleaning

Mold Surface Cleaning

Remove paint and Rust

Contact Us:

Unitech High Precision (Thailand) Co., Ltd.

888/55 Moo9, Bangpla, Bangplee, Samutprakarn

10540 Thailand

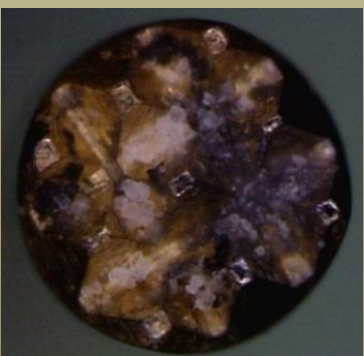
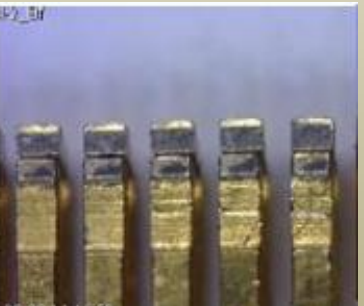
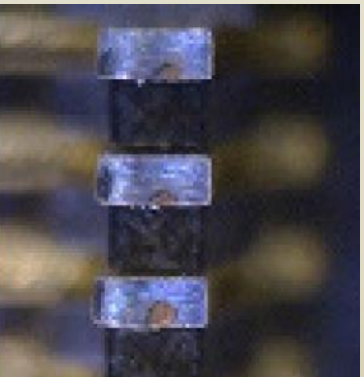
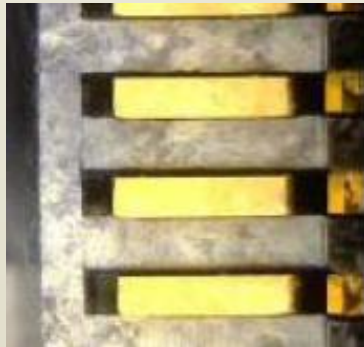
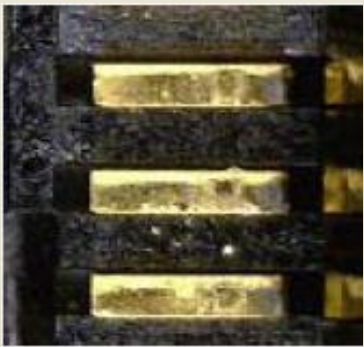
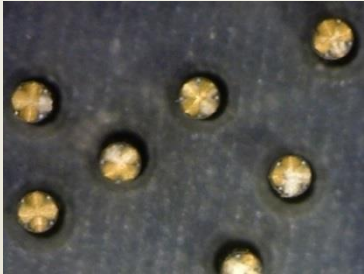
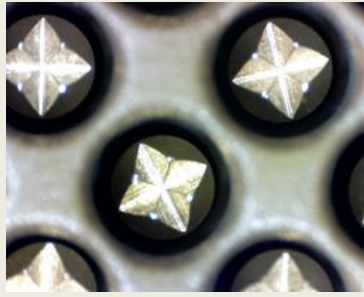
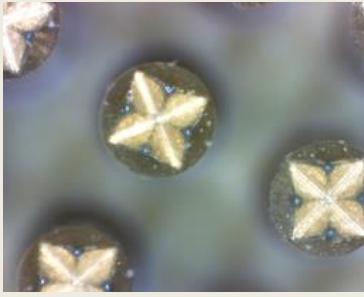
TEL: (+66) 2-130-7576 FAX: (+66) 2-130- 7578

mail: sambhan@unitech-th.com (Thai, English)

kato@unitech-th.com (Japanese)

Before Cleaning

After Cleaning



Characteristics:

- Effective Cooling System
- Longer Lamp Life Span
- Laser Shot Counter
- Password Protection for Setting
- Voltage vs Energy Display
- Key Switch, E-Stop (FDA)
- Indicator Lamp, Remote Interlock (FDA)
- Beam Attenuator (FDA)
- Manual Reset Switch (FDA)
- Certification Label (FDA)
- Water Level Sensor, Water Flow Sensor
- Water Temperature Sensor
- Laser Gun and L-Guide Holder

Technical Specifications:

- Laser Source: Q-Sw Nd : YAG
- Wavelength: 1064 / 532 nm
- Repeated Frequency: 1 – 6 Hz
- Max Output Energy: 800mJ (@1064nm)
- Beam Delivery: Gun and L – Guide
- Power Supply: 230VAC (± 10%)
- Cooling: Air Cooled
- Weight: 28 Kg
- Dimension: (295W x 550D x 500H)mm

Environmental Parameters:

- Temperature : 0 ~ +30°C
- Humidity: ≤ 60%

Accessories:

- Spare Lamp – 1pc
- Laser Protection Goggle – 1pc
- L-Guide – 1pc
- Foot Switch – 1 pc
- Manual – 1 set